

WILDSTAR FARM EQUESTRIAN FACILITY

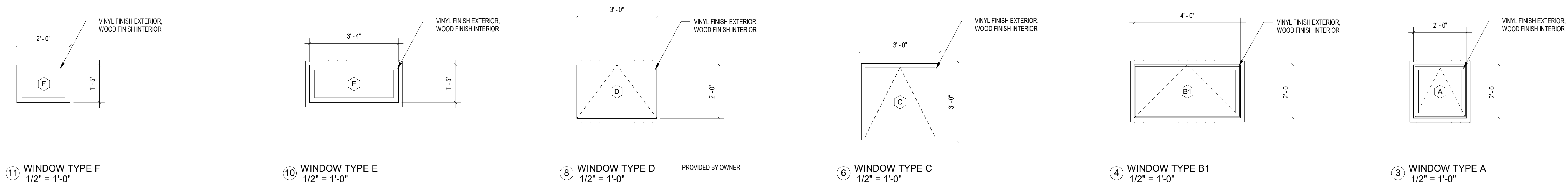
SHERBORN MASSACHUSETTS



Polly Kornblith and Michael Newman
19 Nason Hill Lane
Sherborn, Massachusetts, 01770

© COPYRIGHT 2018 JAMES T. GUARINO CONSULTING.

AMENDED PERMIT SET



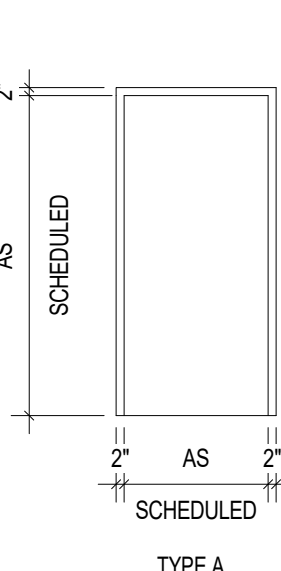
- 11 WINDOW TYPE F**
1/2" = 1'-0"
ANDERSEN 400 SERIES AWNING WINDOW OR EQUAL
 - ARZ1
 - FIXED
 - EXTERIOR: DARK BRONZE
 - INTERIOR: PINE
 - HARDWARE: CONTEMPORARY FOLDING - SATIN NICKEL
 - GRILLE PATTERN: NONE
 - DIVIDED LITE: NONE
 - TRIM: 3.5" FLAT
 - GLASS TYPE: ANNEALED, LOW E-COATING WITH HEATLOCK AND SMARTSUN GLASS
 - U VALUE: 0.25
 - SHGC: 0.20
 - VISIBLE LIGHT TRANSMITTANCE: 0.46
 - AIR INFILTRATION: -0.2
 - US ENERGY STAR RATING C6.0 N
 - WINDOW AREA: 1.7 SF AREA OF GLASS: 2.8 SF
- 10 WINDOW TYPE E**
1/2" = 1'-0"
ANDERSEN 400 SERIES AWNING WINDOW OR EQUAL
 - ARZ1
 - FIXED
 - EXTERIOR: DARK BRONZE
 - INTERIOR: PINE
 - HARDWARE: CONTEMPORARY FOLDING - SATIN NICKEL
 - GRILLE PATTERN: NONE
 - DIVIDED LITE: NONE
 - TRIM: 3.5" FLAT
 - GLASS TYPE: ANNEALED, LOW E-COATING WITH HEATLOCK AND SMARTSUN GLASS
 - U VALUE: 0.25
 - SHGC: 0.20
 - VISIBLE LIGHT TRANSMITTANCE: 0.46
 - AIR INFILTRATION: -0.2
 - US ENERGY STAR RATING C6.0 N
 - WINDOW AREA: 3.1 SF AREA OF GLASS: 4.8 SF
- 8 WINDOW TYPE D**
1/2" = 1'-0"
PROVIDED BY OWNER
USE THE FOLLOWING WHERE NOT PROVIDED BY OWNER
ANDERSEN 400 SERIES AWNING WINDOW OR EQUAL
 - A31
 - OPERABLE
 - EXTERIOR: DARK BRONZE
 - INTERIOR: PINE
 - HARDWARE: CONTEMPORARY FOLDING - SATIN NICKEL
 - GRILLE PATTERN: NONE
 - DIVIDED LITE: NONE
 - TRIM: 3.5" FLAT
 - GLASS TYPE: ANNEALED - CLEAR - DUAL PANE
 - U VALUE: 0.49
 - SHGC: 0.79
 - VISIBLE LIGHT TRANSMITTANCE: 83%
 - AIR INFILTRATION: -0.2
 - US ENERGY STAR RATING N/A
 - WINDOW AREA: 6.0 SF AREA OF GLASS: 4.3 SF
- 6 WINDOW TYPE C**
1/2" = 1'-0"
ANDERSEN 400 SERIES AWNING WINDOW OR EQUAL
 - A31
 - OPERABLE
 - EXTERIOR: DARK BRONZE
 - INTERIOR: PINE
 - HARDWARE: CONTEMPORARY FOLDING - SATIN NICKEL
 - GRILLE PATTERN: NONE
 - DIVIDED LITE: NONE
 - TRIM: 3.5" FLAT
 - GLASS TYPE: ANNEALED - CLEAR - DUAL PANE
 - U VALUE: 0.49
 - SHGC: 0.79
 - VISIBLE LIGHT TRANSMITTANCE: 83%
 - AIR INFILTRATION: -0.2
 - US ENERGY STAR RATING N/A
 - WINDOW AREA: 10.2 SF AREA OF GLASS: 7.9 SF
- 4 WINDOW TYPE B1**
1/2" = 1'-0"
ANDERSEN 400 SERIES AWNING WINDOW OR EQUAL
 - A41
 - OPERABLE
 - EXTERIOR: DARK BRONZE
 - INTERIOR: PINE
 - HARDWARE: CONTEMPORARY FOLDING - SATIN NICKEL
 - GRILLE PATTERN: NONE
 - DIVIDED LITE: NONE
 - TRIM: 3.5" FLAT
 - GLASS TYPE: TEMPERED, LOW E-COATING WITH HEATLOCK AND SMARTSUN GLASS
 - U VALUE: 0.25
 - SHGC: 0.20
 - VISIBLE LIGHT TRANSMITTANCE: 0.46
 - AIR INFILTRATION: -0.2
 - US ENERGY STAR RATING C6.0 N
 - WINDOW AREA: 8.0 SF AREA OF GLASS: 5.9 SF
- 3 WINDOW TYPE A**
1/2" = 1'-0"
ANDERSEN 400 SERIES AWNING WINDOW OR EQUAL
 - A21
 - OPERABLE
 - EXTERIOR: DARK BRONZE
 - INTERIOR: PINE
 - HARDWARE: CONTEMPORARY FOLDING - SATIN NICKEL
 - GRILLE PATTERN: NONE
 - DIVIDED LITE: NONE
 - TRIM: 3.5" FLAT
 - GLASS TYPE: TEMPERED, LOW E-COATING WITH HEATLOCK AND SMARTSUN GLASS
 - U VALUE: 0.25
 - SHGC: 0.20
 - VISIBLE LIGHT TRANSMITTANCE: 0.46
 - AIR INFILTRATION: -0.2
 - US ENERGY STAR RATING C6.0 N
 - WINDOW AREA: 4.0 SF AREA OF GLASS: 2.6 SF

DOOR SCHEDULE

OPNG	ROOM	SIZE	FRAME	DOOR	FIRE RATING	FUNCTION	REMARKS
108	OWNER'S TACK RM	3' X 6'-8"	A-HM	F-WD		OFFICE	
110	TACK ROOM	3' X 6'-8"	A-HM	F-HM	B LABEL / 90 MIN	PASSAGE	INSULATED*
110A	TACK ROOM	2'-8" X 6'-8"	A-WD	P-WD		PASSAGE	
111	TOILET	3' X 6'-8"	A-HM	F-HM		PRIVACY	
111A	LAUNDRY	3' X 6'-8"	A-HM	F-HM	B LABEL / 90 MIN	PASSAGE	INSULATED*
117	EXTERIOR	3' X 6'-8"	A-HM	FG-HM		OFFICE	EGRESS
201	BEDROOM	2'-8" X 6'-8"	A-WD	F-WD		OFFICE	
201A	BEDROOM	2'-8" X 6'-8"	A-HM	F-HM	B LABEL / 90 MIN	OFFICE	EGRESS INSULATED
202	CLOSET	2'-8" X 6'-8"	A-WD	F-WD		PASSAGE	
203	BATH	2'-8" X 6'-8"	A-WD	F-WD		PRIVACY	
204	APARTMENT	2'-8" X 6'-8"	A-HM	F-HM	B LABEL / 90 MIN	OFFICE	INSULATED*
204A	CLOSET	2'-8" X 6'-8"	A-WD	F-WD		PASSAGE	
207	HAY LOFT	2'-8" X 6'-8"	A-HM	F-HM	B LABEL / 90 MIN	PASSAGE	
207A	EXTERIOR	2'-8" X 6'-8"	A-HM	FG-HM		OFFICE	EGRESS
207B	EXTERIOR	2'-8" X 6'-8"	A-HM	FG-HM		OFFICE	EGRESS

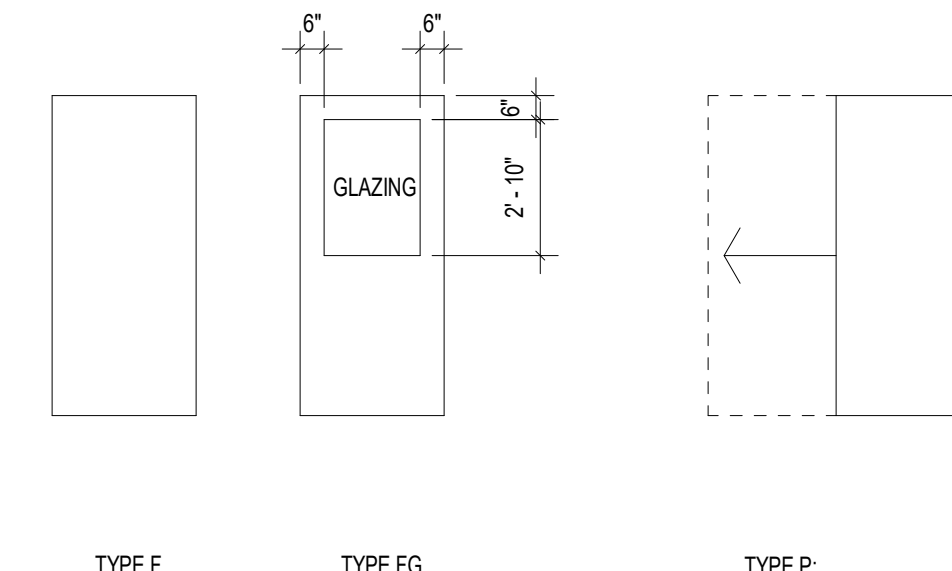
* MIN U VALUE = 0.41

FRAME

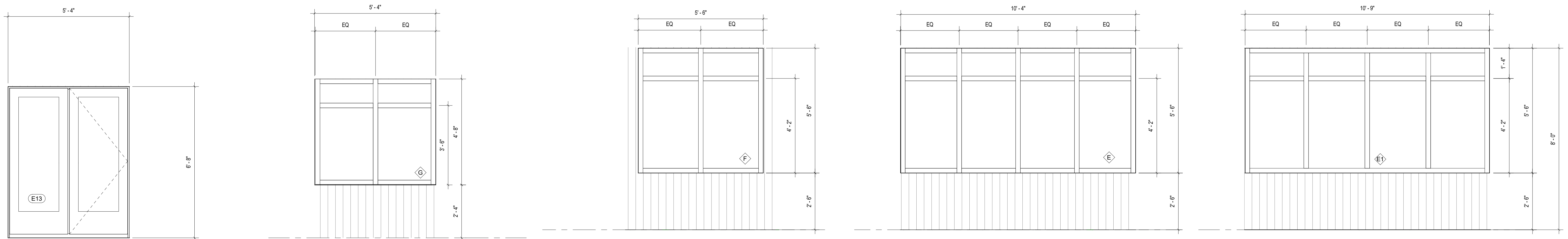


HM = HOLLOW METAL - PAINTED
WD = WOOD - CLEAR FINISH

DOOR TYPES



13 DOOR SCHEDULE
1/4" = 1'-0"



12 PATIO DOOR TYPES E12 E13 AND E14
1/2" = 1'-0"

FOR OPENINGS E12 AND E13: 90 min rating, IGU = PILKINGTON PYROSTOP GLASS

TECHNICAL GLASS PRODUCTS / TOP - FIREFRAMES STEEL DOOR FRAMES

MAX. SINGLE DOOR LEAF SIZE: 48'-7/8" x 95'-15/16" in (1.24 m x 2.44 m)
MAX. EXPOSED GLASS: SIZE PER PIECE: 41'-00" x 69'-3/4" in (1.06 m x 2.28 m)
MANUFACTURER'S DESIGNATION: 120-362*

• AIR INFILTRATION: PROVIDE SYSTEMS THAT ALLOW A MAXIMUM AIR LEAKAGE THROUGH FIXED GLAZED OPENINGS OF 0.06 CFM/SQ. FT. OF AREA WHEN TESTED PER ASTM E 283 AT A STATIC AIR DIFFERENTIAL OF 1.57 (8.24) LBS/SQ FT
• VISIBLE LIGHT TRANSMITTANCE: .74
• U VALUE: .35

FOR OPENING E14: ANDERSEN 400 SERIES FRENCHWOOD HINGED PATIO DOOR - OR EQUAL

• FWH5488: 63 1/4" X 79 1/2" - OUTSWING
• EXTERIOR: TERRAZZO DOOR WITH DARK BRONZE TRIM
• INTERIOR: PINE
• HARDWARE: FSB1035, STAINLESS STEEL
• GRILLE PATTERN: NONE
• DIVIDED LITE: NONE
• TRIM: 3.5" FLAT
• GLASS TYPE: ANNEALED, LOW E-COATING WITH HEATLOCK AND SMARTSUN GLASS
• U VALUE: 0.27
• SHGC: 0.16
• VISIBLE LIGHT TRANSMITTANCE: 0.36
• AIR INFILTRATION: -0.2
• US ENERGY STAR RATING C6.0 N
• DOOR AREA: 32.68 SF AREA OF GLASS: 16.64 SF

9 STOREFRONT TYPE G
1/2" = 1'-0"

2 HOUR RATED GLAZING AND FRAMES

TECHNICAL GLASS PRODUCTS / TOP STEEL "HEAT BARRIER" SERIES 2-HR RATED FRAMES AND INSULATING GLASS UNITS: IGU = PILKINGTON PYROSTOP GLASS

• MANUFACTURER'S DESIGNATION: 120-362*
• 25 SQUARE FEET MAX. EXPOSED GLASS AREA PER PIECE
• MAX. EXPOSED GLASS DIMENSION = 11'7"
• AIR INFILTRATION: PROVIDE SYSTEMS THAT ALLOW A MAXIMUM AIR LEAKAGE THROUGH FIXED GLAZED OPENINGS OF 0.06 CFM/SQ. FT. OF AREA WHEN TESTED PER ASTM E 283 AT A STATIC AIR DIFFERENTIAL OF 1.57 (8.24) LBS/SQ FT
• VISIBLE LIGHT TRANSMITTANCE: .74
• U VALUE: .35

7 STOREFRONT TYPE F
1/2" = 1'-0"

EFCO 403T SERIES (OR EQUAL) WITH THERMALLY-BROKEN ALUMINUM FRAME AND INSULATING GLASS UNITS
• 2' X 4'-1/2" FRAME

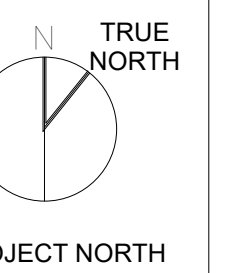
5 STOREFRONT TYPE E
1/2" = 1'-0"

EFCO 403T SERIES (OR EQUAL) WITH THERMALLY-BROKEN ALUMINUM FRAME AND INSULATING GLASS UNITS
• 2' X 4'-1/2" FRAME

1 STOREFRONT TYPE E1
1/2" = 1'-0"

EFCO 403T SERIES (OR EQUAL) WITH THERMALLY-BROKEN ALUMINUM FRAME AND INSULATING GLASS UNITS
• 2' X 4'-1/2" FRAME

KEYPLAN



WINDOW AND DOOR TYPES AND DETAILS

Scale: As indicated

Job No.: 17001.00

Drawn By: JTG

Date: 6/18/2018 7:37:58 PM

A6-2-1